



# The Wallaby News

WE'RE RIDING THE WAVE TO SUCCESS!



## Principal's Message

Dear Winston Park Families,

Welcome back new and returning Wallabies! We are so excited that we are all back on campus ready to learn and grow- Riding the Wave to Success! We know that it continues to be a challenging time for us all as we navigate through a world-wide pandemic, but we will continue to make health and safety protocols our priority. Please regularly review any updated protocols provided by Broward County Public Schools which are available at <https://www.browardschools.com/Page/55422>.

We appreciate all of our students and families for joining us last week for our Meet & Greet activities on campus! We enjoyed reconnecting and welcoming all students back to W.P.E. This year, our Pre-K, Kindergarten, & First Grade students were able to experience the milestone of a traditional school opening experience, completed with parent drop off at the classroom on the first day of school. A huge thank you to Sign Greeters for the amazing Welcome sign on our lawn that provided the backdrop to memorable school opening pictures.

Last year showed us that flexibility and creativity are sometimes necessary in how we educate our students. We want to take this opportunity to thank you, the WPE family, for all of your hard work, flexibility, and support over the span of the pandemic. It was not an ideal situation and there were many bumps in the road, but overall, we persevered and remained resilient regardless of the circumstances faced.

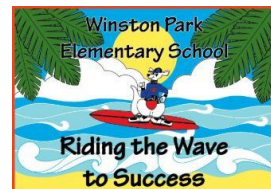
Our entire district is committed to creating a safe and secure learning environment. Please understand that this means our campus is less accessible than in prior school years. We will continue to update you through our Parent Link messages voiced by Mr. Halse and our website announcements. Please be patient; our intent is to continue to improve upon your children's safety. A smile and reassuring affirmation to your child will help ease any anxiety regarding these enhanced protocols. Additionally, please support our efforts by discussing the importance of our emergency drills, as we will complete them monthly. The purpose is to train students and staff on what to do in an emergency.

Our students will continue "Leading the Way" with exemplary behavior! We have 3 simple expectations; #1 Be respectful #2 Be Responsible and #3 Maintain Self-control. All students have the opportunity to earn our *Leading the Way tickets* to be entered into a weekly drawing for prizes. Listen for your names every Friday morning!

Parents and families are encouraged to join our PTA. Membership is \$10.00 and directly benefits our school. Stay informed by checking our website <https://www.browardschools.com/winstonpark> and social media pages. We are all here to answer any questions. We are proud and privileged to be your administrative team and are honored to work at Winston Park Elementary in this amazing community.

With Love and Gratitude,

Carolyn Eggelletion, Matthew Halse, & Tenise McCray



**A Title I School committed to learning & growing!**

**Carolyn Eggelletion  
Principal**

**Matthew Halse  
Intern Principal**

**Tenise McCray  
Assistant Principal**

**Our mission at Winston Park Elementary is to provide a quality learning environment that will encourage students to reach their maximum potential and meet their diverse needs.**

**4000 Winston Park Boulevard  
Coconut Creek, Florida 33073**

**Phone Number  
754-322-9000**

**School Hours:  
8:00 am – 2:00pm**

**Staff Supervision & Breakfast  
begin at 7:30 am**

**Report an Absence  
754-322-9002**

The School Board of Broward County, Florida prohibits any policy or procedure which results in discrimination on the basis of age, color, disability, gender identity, gender expression, genetic information, marital status, national origin, race, religion, sex or sexual orientation.



# CALENDAR OF EVENTS



September 1, 2021: PTA & School Advisory Council Meeting in the Cafeteria at 7:00 pm

September 6<sup>th</sup> & 7<sup>th</sup>: No School

September 9, 2021: Fall Picture Day

September 14, 2021: School Advisory Council Meeting in the Media Center at 2:30 pm

September 16, 2021: No School

September 20<sup>th</sup> -24<sup>th</sup>: Choose Peace Week

## SAC Meeting Dates for 21-22

- September 14, 2021 @ 2:30 pm in the Media Center
- October 12, 2021 @ 2:30 pm in the Media Center
- November 9, 2021 @ 2:30 pm in the Media Center
- December 14, 2021 @ 2:30 pm in the Media Center
- January 18, 2022 @ 2:30 pm in the Media Center
- February 8, 2022 @ 2:30 pm in the Media Center
- March 8, 2022 @ 2:30 pm in the Media Center
- April 12, 2022 @ 2:30 pm in the Media Center
- May 10, 2022 @ 2:30 pm in the Media Center

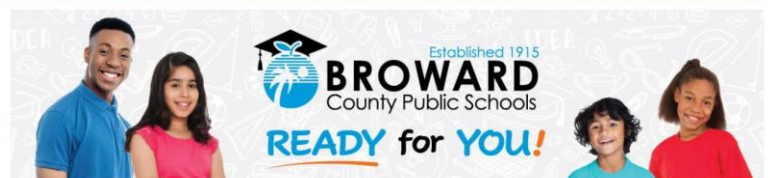
**It's time to POWER UP**  
Broward County Public Schools Food and Nutrition Services

**APPLY ONLINE!**  
**FREE OR REDUCED LUNCH**  
Free and reduced price lunches are available to students that meet economic eligibilities.

**MYSCHOOLAPPS.COM**

The online meal application is available in English, Spanish, Haitian Creole, and Portuguese at MyschoolApps.com.  
For more information on Meal Benefits, contact the Food and Nutrition Services Department at **754-321-0250**  
**FREEANDREDUCEDMEALS@BROWARDSCHOOLS.COM**

2021/22 Back-to-School Toolkit



Parents and guardians can use the District's back-to-school Wizard to complete annual forms. The forms are easy to complete, and all data is protected and secure. Remember to update your contact information to receive the most up-to-date messages from your child's school and the District. Please use the link below to complete your child's annual forms.

## [Back to School Wizard Online Forms](#)

(Ctrl + click to follow link.)



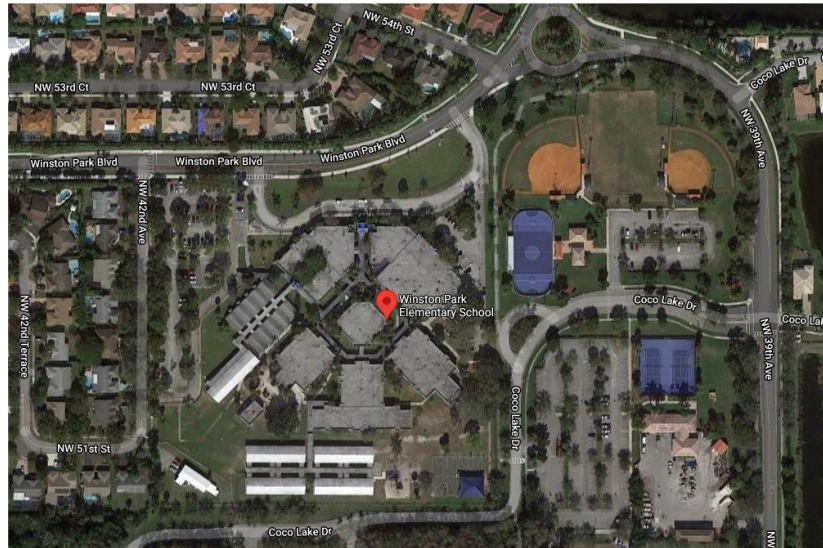
To save you time and effort, the information you provide on your Free and Reduced-Price School Meals Application, Eligibility Status, may be shared with other programs for which your children may qualify.

For additional information follow the link for more information.

<https://bit.ly/FREEREDUCEDMEALS>

Always check our school's website for important dates and details. <https://www.browardschools.com/winstonpark>

## A Special Note from Officer George



Traffic flow for Winston Park Elementary. Children in Pre-K, Kindergarten, 1<sup>st</sup> and second grades are dropped off and picked up on the West side of the school. They enter through the southernmost entrance on 42<sup>nd</sup> Avenue. Please do not enter through the northern opening on 42<sup>nd</sup> Avenue. It is for exit only. During pickup and drop off the traffic flow is one way only.

Children in 3, 4 & 5<sup>th</sup> grade should be picked up and dropped off on the Parkside (East side of the school). Turn Westbound on Coco Lake Drive from 39<sup>th</sup> Avenue. You may stay in line and wait or park in one of the two parking lots across from the school. Please do not park along the road or on the grass. Please use the crosswalks for crossing the street.

For parents who have children in both the upper and lower grade levels. You may choose which side to pick both or all of them from the same side. Your choice just please communicate with your children and teachers which side they will go to.

Please do not enter the bus loop. This is for **busses only** and it is illegal to pass a bus unloading children. **Do not** drop children off along the streets around the school. It is not safe. Don't put your convenience before the safety of your children. You can also be cited for this.



- Please pull your car forward as directed by school staff.
- Student drop off is **CURB SIDE Only**. (*passenger side*)
- Please **DO NOT drop off in the left lane**, it's not safe as cars are constantly in motion.





Safety and security are our top priorities. Please make sure to remember the following safety procedures:

- All visitors must report to the front office.
- All visitors must go through our Raptor Visitor System.
- All individuals are required to wear a mask on our campus.
- All visitors must have an ID in order to gain access to the school.
- **All parents MUST have your child(ren)'s Silent Dismissal Card** to pick up their child by car or “walk-up”. You MUST have the physical card which will be scanned by our staff. NO EXCEPTIONS! If you do not have the Silent Dismissal card, you will be asked to retrieve it from your car or get an additional card printed in our front office. You may not tell us the number; we will not enter it manually.
- **CONSISTENCY with dismissal is critical.** Please alert the teacher and office ASAP of any changes.
- Students will wear their student ID badges (once school pictures are taken) while on campus.
- Parents must update their contact information with the front office.
- All students should be dressed in our unified dress code. Please visit the website for specific colors of shirts and pants/shorts/skirts.
- Early sign-outs end promptly at 1:30 pm.
- If your child **feels unwell** or have any symptoms such as a fever, persistent cough, and shortness of breath, please **keep them at home.**



## Title 1 News

1. School Improvement Plan: School staff and parents jointly develop the plan. It includes yearly objectives and activities that will be implemented at the school level. If you would like to review a hard copy of this plan or translation is needed, please contact Mrs. Tenise McCray or Ms. Leslie Jackson at (754) 322 - 9000.
2. Parent and Family Engagement Plan: School staff and parents jointly develop the plan as part of the School Improvement Plan. The plan includes the parent activities to be implemented through the school year and an evaluation of last year's parent program. If you would like to review a hard copy of this plan or translation is needed, please contact Ms. Carolyn Courtney at (754) 322 – 9000.
3. District Parent Involvement Plan: District staff and parents jointly develop the plan. The plan includes the parent activities to be implemented through the school year and an evaluation of last year's district parent program. If you would like to review a hard copy of this plan or translation is needed, please contact Paula Canady, Title I Program Specialist at 754-321-1400.
4. Principal Attestation Letter: Indicates the percentage of teachers and paraprofessionals that are highly qualified.
5. Parent School Compacts were provided and reviewed with families during the 1<sup>st</sup> quarter. Please make sure you read and review the Compacts with your child and return the signed copy to the school. We have paper copies available in our front office for your convenience.

# Social Emotional Learning



Social and Emotional Learning (SEL) helps students develop the skills necessary to identify and manage their emotions, set and achieve goals, feel and show empathy for others, respect diversity, create and maintain positive relationships and make safe and responsible decisions. We recognize the importance of teaching our students these life skills that are needed now and throughout adulthood. Mindfulness supports SEL as the base of awareness and is described as paying attention in the present moment. It includes being aware of one's thoughts, emotions, bodily sensations, and the surrounding environment. Practicing mindfulness promotes mental and physical well-being and resiliency.



## Student Code of Conduct

The Code of Student Conduct, Policy 5.8, provides specific information regarding the rules that all students are expected to adhere to, as well as consequences for violations. Important among these rules are consistent and timely attendance, respect for people and property, appropriate dress, technology usage, student publications, student activities, student records and the right to appeal, including grievance procedures. The School Board of Broward County, Florida, approves and affirms its support of the Code of Student Conduct, Policy 5.8. Please use the following link to view pdf versions of this and other important policies.

<https://www.browardschools.com/student-conduct>



Please don't forget to join our P.T.A! The membership fee is \$10.00! Payments can be made online at:

<https://wp-pta.new.memberhub.store/>

Our president Mrs. Fox delivers orders to our school several times per week for all shirt orders. Parents can pick up their orders from the office.